



**SAFER SCHOOLS AND CAMPUSES
BEST PRACTICES
CLEARINGHOUSE**

Lessons from the Field: Family & Community Engagement and Returning to In-Person Instruction

APRIL 28, 2021



NCSSLE Website

[HTTPS://SAFESUPPORTIVELEARNING.ED.GOV](https://safesupportivelearning.ed.gov)

National Center on Safe Supportive Learning Environments

Safe Supportive Learning
Engagement | Safety | Environment

School Climate Improvement Engagement Topics Safety Topics Environment Topics Events, Products, and TA States and Grantees



Find Out What You Can Do to Prevent College Drinking Based on Lessons Learned

Featured Event

Lessons from the Field: Guidance for Early Childhood Education Programs and Providers

April 14, 2021 - 03:00pm EDT

[Learn More](#)

DO YOU HAVE A QUESTION?

Welcome!

The National Center on Safe Supportive Learning Environments (NCSSLE) offers information and technical assistance to States, districts, schools, institutions of higher learning, and communities focused on improving school climate and conditions for learning. We believe that with the right resources and support, educational stakeholders can collaborate to sustain safe, engaging and healthy school environments that support student academic success.

[More About Us](#)

In Demand

Resources

Topics

School Climate Improvement ED School Climate Surveys Trauma-Sensitive Creating a Safe and Respectful Human Trafficking Improving Higher Supporting Trauma Promoting Mental Health Responding to Covid-19



School Climate Improvement Resource Package



ED School Climate Surveys



Trauma-Sensitive Schools Training Package



Building Student Resilience Toolkit



Human Trafficking in America's Schools



Improving Higher Education Learning Environment



Supporting Trauma Recovery



Promoting Mental Health



Responding to Covid-19

To access information and archived materials from previous Lessons from the Field webinars, go to: <https://safesupportivelearning.ed.gov/lessons-field-webinar-series>



Logistics

Zoom Control Panel

Audio Settings ^



Chat



Raise Hand



Q&A

Leave Meeting

Technical Issues

For assistance during the webinar, please contact
Shoshana Rabinovsky at srabinovsky@air.org.

This webinar is being recorded and will be archived at the following location:
<https://safesupportivelearning.ed.gov/events/webinar/lessons-field-family-community-engagement-and-returning-person-instruction>



The content of this presentation does not necessarily represent the policy or views of the U.S. Department of Education, nor does it imply endorsement by the U.S. Department of Education.



Initial Polling Questions

1. Are you a:
 - Teacher
 - School staff
 - School administrator
 - Education agency staff
 - Family/community engagement staff
 - Other (Please specify in the chat.)
2. In your community, are instruction and supports being delivered:
 - In-person
 - Hybrid
 - Virtually
 - Not applicable



Speakers



Christian Rhodes

Chief of Staff, Office of Elementary and Secondary Education, U.S. Department of Education



Tina Hike-Hubbard

Chief Communications and Community Engagement Officer, Baltimore City Public Schools (MD)



Jessica Cardichon

Deputy Assistant Secretary, Office of Planning, Evaluation, and Policy Development, U.S. Department of Education



Brandon Pinkney

Principal, Walter P. Carter Elementary/Middle School, Baltimore, MD

Bios for the speakers are archived at the following location:

<https://safesupportivelearning.ed.gov/events/webinar/lessons-field-family-community-engagement-and-returning-person-instruction>



Agenda

1

Introduction and Logistics

2

Strategies for Engaging Families and Communities When Returning to In-Person Instruction and Meeting All Students' Needs

3

Panel Discussion

4

Questions and Answers

5

Wrap Up & Closing



Strategies for Engaging Families and Communities When Returning to In-Person Instruction and Meeting All Students' Needs

Jessica Cardichon

Deputy Assistant Secretary, Office of Planning, Evaluation, and Policy Development, U.S. Department of Education



COVID-19 Handbook: Volume 1

STRATEGIES FOR SAFELY REOPENING ELEMENTARY AND SECONDARY SCHOOLS

- Address the disproportionate toll of COVID-19:
 - Communicate school health and safety measures and prevention strategies.
 - Solicit input and answer questions.
- Use strategies that support meaningful community engagement:
 - Surveys
 - Virtual town halls
 - Active and specific outreach (partnerships with trusted CBOs)
 - Access for English learners and students and adults with disabilities
- Communicate data on civil rights and related requirements.



COVID-19 Handbook: Volume 2

ROADMAP TO REOPENING SAFELY AND MEETING ALL STUDENTS' NEEDS

- Conduct active and specific engagement with underserved families.
- Recognize different levels of trust.
- Implement SEL in culturally and racially responsive ways.
- Remove the stigma of mental health.
- Create safe and inclusive environments.
- Close the digital divide.
- Publicly report equity data and ARP ESSER plans.



**SAFER SCHOOLS AND CAMPUSES
BEST PRACTICES
CLEARINGHOUSE**

Panel Discussion

LESSONS FROM THE FIELD



BALTIMORE CITY

PUBLIC SCHOOLS

**Lessons from the Field: Family & Community Engagement
and Returning to In-Person Learning**

Tina Hike-Hubbard

Chief of Communications, Engagement and Enrollment

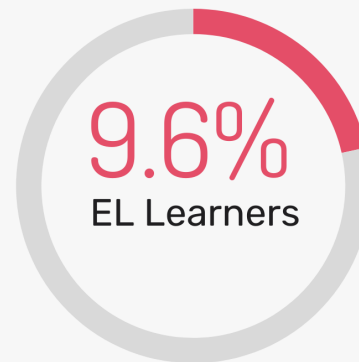
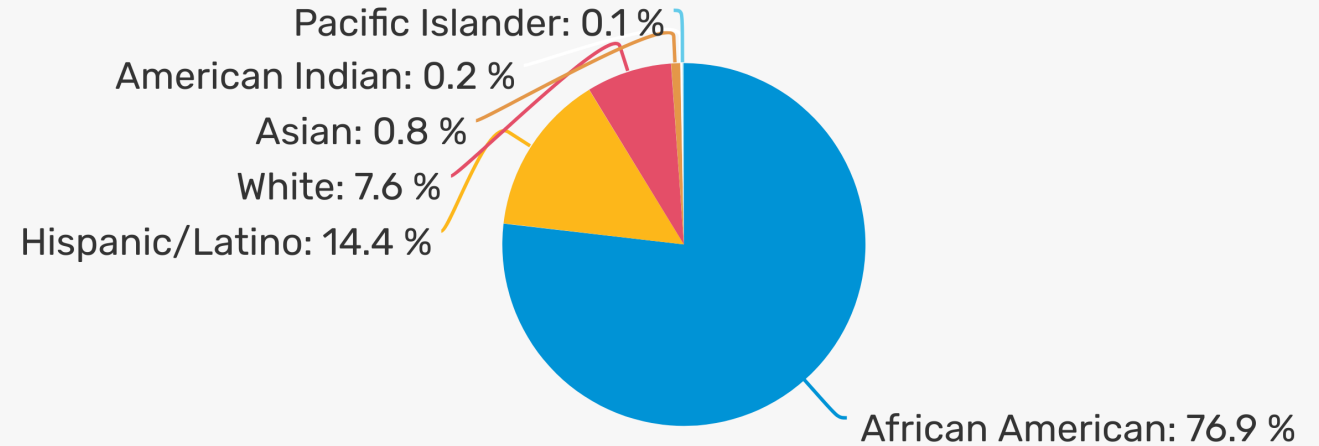
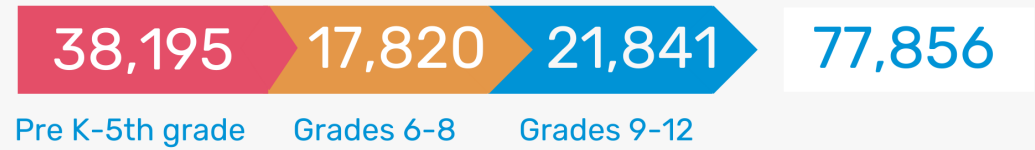
April 28, 2021

Dr. Sonja Brookins Santelises
Chief Executive Officer, Baltimore City Public Schools

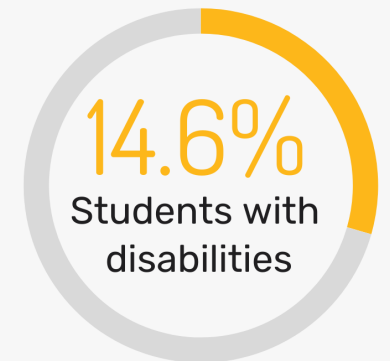
BALTIMORE CITY PUBLIC SCHOOLS

Student Enrollment & Demographics 2020-2021

165 schools/programs
\$1.39 billion budget
4,912 teachers
1:16 teacher to student ratio



City Schools is a CEP district - we provide free breakfast and lunch to all students and do not collect applications for free and reduced-priced meals, with the result that low-income status is under-reported (58%)





Our Call to Action...

Helping parents and families become stronger partners in the education of their children.



Improving our families' experience



Believing in and caring about our families



Creating access points for information

Mission and Theory of Action...

To develop and cultivate effective school, family, and community relationships and leverage those relationships as key resources in the success of students and schools.

Strategic Collaboration



Aligned to our Blueprint



Engagement Linked to Student Success



Family Engagement Structure and Supports

Dual Capacity
Building for Staff
and Families

Multilingual
Family
Engagement

Title I Parent and
Family
Engagement
(CSI/SIG)

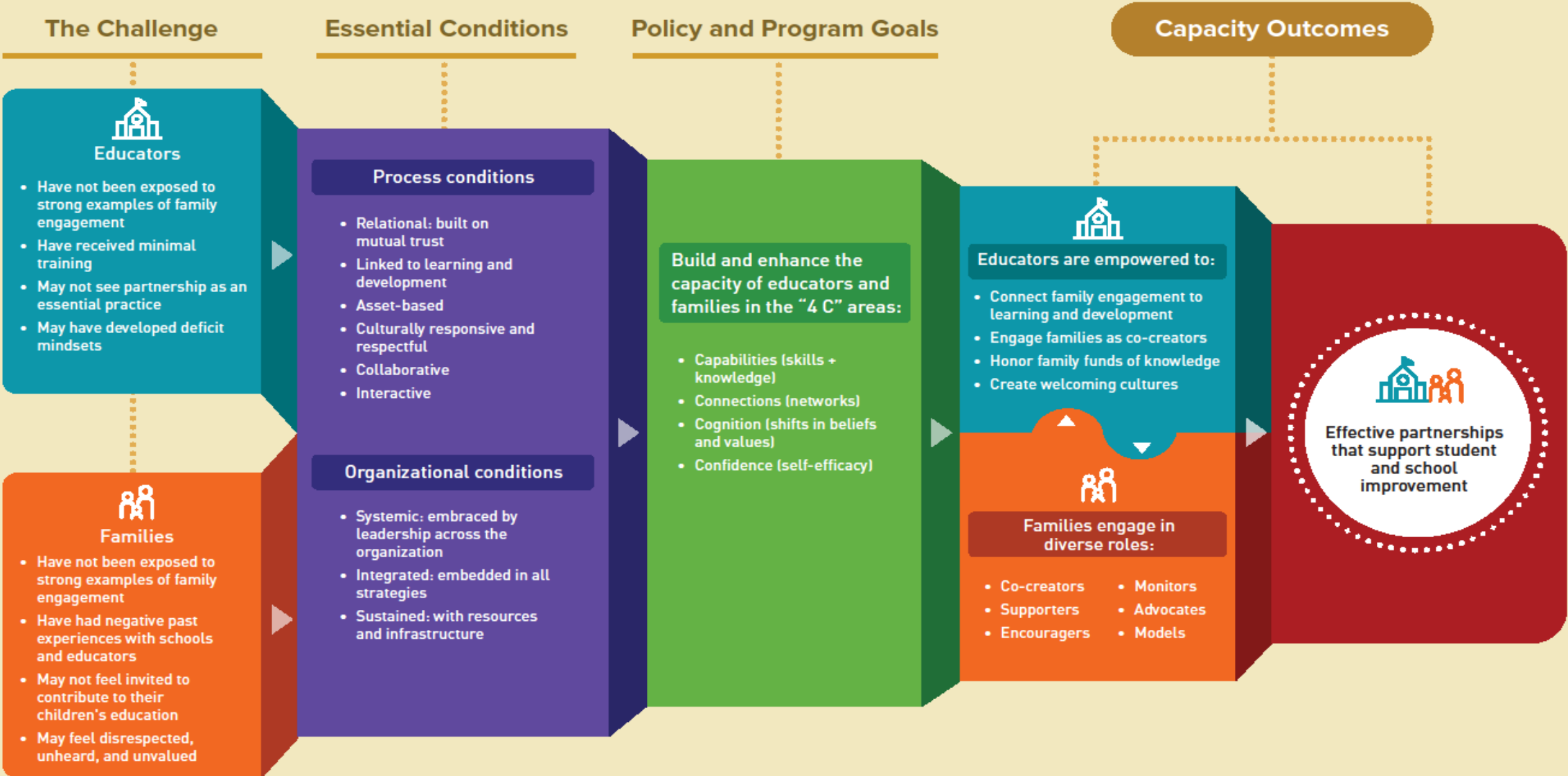
Policy
Implementation
and Strategy

High
School/Non-Title
I/AOP Family
Engagement

CORE FOCUS AREAS

Linked to Learning | Two-Way Communication | Language Access | Decision-Making and Advocacy | Parent Rights and Responsibilities | Evaluation and Assessment

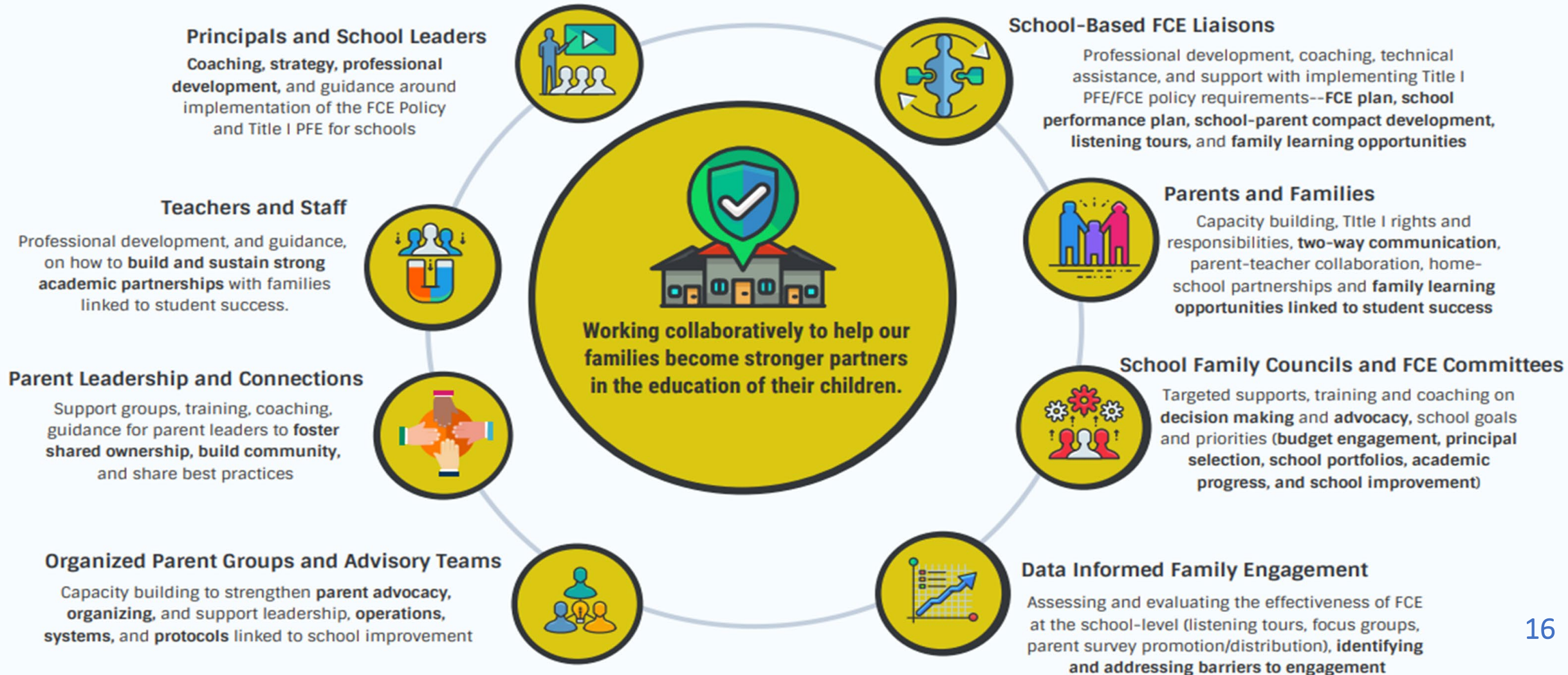
The Dual Capacity-Building Framework for Family-School Partnerships (Version 2)



Family and Community Engagement (FCE) School Supports

All services and supports are aligned to the district's new strategy for Family Engagement, the **Dual Capacity-Building Framework for Family-School Partnerships**, FCE Policy, and Title I Parent and Family Engagement requirements.

All FCE Specialists and school teams are provided content expertise and support from the Family Engagement Director, Bilingual FCE Specialist, FCE Staff Policy Specialist, FCE Evaluator, and Capacity Building Specialist.



Family Engagement District Level Initiatives



Parent Support:
School-Based Parent Cafés



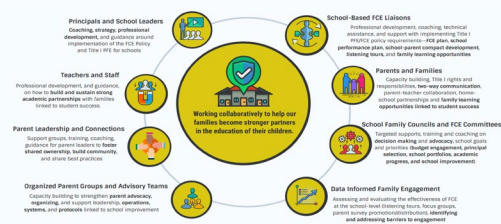
Dual Capacity Building:
Training and Workshops for
Parents, Families and Staff



Decision Making and Advocacy:
Relaunching School-Family
Councils

Family and Community Engagement (FCE) School Supports

All resources and supports are aligned to the district's new strategy for Family Engagement, the Best Capacity-Building Framework for Family-School Partnerships, FCE Policy, and Title I Parent and Family Engagement requirements. All FCE Specialists and school teams are provided content expertise and support from the Family Engagement Division, Strategic FCE Specialists, FCE Staff Training Specialists, FCE Evaluators, and Capacity-Building Specialists.



Enhanced Supports:
Dedicated supports and staff for
Title I schools



Evaluation and Assessment
Family and Community
Engagement



Family Learning Resources:
Bmore Family Learning Kits

**BALTIMORE CITY
PUBLIC SCHOOLS**

Community Engagement

Strengthen relationships with neighborhoods and community-based organizations to increase opportunities for collaboration and stakeholder engagement that support positive outcomes for students and families.



Neighborhood Outreach

Connecting neighborhood assets and resources to schools.

- Community Ambassador Program
- CEO Community Conversations



Partnerships & Volunteers

Strategically aligning partner resources to support district and school priorities.



Community Schools

Providing a unique set of partnerships between the school and community-based resources designed to support student success.



Youth Engagement

Elevating student voice, leadership, agency and representation in schools and the district.

BALTIMORE CITY PUBLIC SCHOOLS

BOARD OF SCHOOL COMMISSIONERS

Linda M. Chinnia, *Chair*

Johnette A. Richardson, *Vice-Chair*

Dr. Michelle Harris Bondima

Dr. Durryle Brooks

Andrew “Andy” Frank

Dr. Martha James-Hassan

Ronald S. McFadden

Vernon A. Reid

Shantell L. Roberts

Kyreé Sykes, *Student Commissioner*

Christian Gant, Esq., *Board Executive Officer*

SENIOR MANAGEMENT TEAM

Dr. Sonja Brookins Santelises, *Chief Executive Officer*

Joshua I. Civin, *Chief Legal Officer*

Dr. Joan Dabrowski, *Chief Academic Officer*

John L. Davis, Jr., *Chief of Schools*

Christopher Doherty, *Chief Financial Officer*

Jeremy Grant-Skinner, *Chief Human Capital Officer*

Tina Hike-Hubbard, *Chief of Communications, Engagement, and Enrollment*

Theresa Jones, *Chief Achievement and Accountability Officer*

Alison Perkins-Cohen, *Chief of Staff*

Dr. Lynette Washington, *Chief Operating Officer*



**SAFER SCHOOLS AND CAMPUSES
BEST PRACTICES
CLEARINGHOUSE**

Panel Discussion

LESSONS FROM THE FIELD



Participant Questions and Answers





Closing Polling Question

3. Select the topic(s) for which you feel additional information is needed. (Select all that apply.)

- Effective communication strategies that build trust and allow you to reach various sub-groups in your community
- Resources available to strengthen family & community outreach
- Resources for families and community members on mitigation strategies for home and school
- Reducing anxiety among caregivers and community members related to returning to in-person instruction
- Trauma-sensitive responses to families and community members
- Other (Please specify in the chat box.)



Feedback Form



SAFER SCHOOLS AND CAMPUSES
**BEST PRACTICES
CLEARINGHOUSE**

Lessons from the Field: Family and Community Engagement and Returning to In-Person Instruction

Thank you for attending the webinar, *Lessons from the Field: Family and Community Engagement and Returning to In-Person Instruction*, on April 28, 2021. To best serve you, we would greatly appreciate receiving your feedback on the webinar.

1. Prior to the webinar, how knowledgeable were you about the webinar's topic?

- Not At All Knowledgeable
- Somewhat Knowledgeable
- Very Knowledgeable

2. Overall this webinar was a good use of my time.

- Strongly Disagree
- Somewhat Disagree
- Somewhat Agree
- Strongly Agree

[HTTPS://WWW.SURVEY
MONKEY.COM/R/LFTF S
SESSION3](https://www.surveymonkey.com/r/lftf_session3)



Thank You!

Should you have any questions, please contact us at NCSSLE@air.org or 800-258-8413. We are happy to help!

NCSSLE Website

<https://safesupportivelearning.ed.gov>

Best Practices Clearinghouse

<https://bestpracticesclearinghouse.ed.gov/>